

CONSERVATION CONNECTIONS

a quarterly publication of the Dickinson County Conservation District



USDA Service Center
 328 NE 14th Street
 Abilene, KS 67410

Conservation District/NRCS—785-263-2787
FSA—785-263-1351

2020 Board of Supervisors

- Darren Haney.....Chairman
- Francis Anderson.....Vice Chairman
- Dennis Chartier.....Treasurer
- Sam Zook.....Member
- Josh Schlesener.....Member

Conservation District Staff

- Cindy Montgomery.....District Manager
- Brian Lang.....Drill Manager

NRCS Staff

- Adam Elliot.....Supervisory District Conservationist
- Danny Carroll.....Soil Conservation Technician
- Megan Reisinger.....Soil Conservationist

Farm Service (FSA)

- Braden Stueve.....County Executive Director
- Ellen Alvarez.....Program Technician
- Sandy Johnson.....Program Technician
- Deb Marston.....Program Technician
- Michele Snowball.....Program Technician
- DeLynn Farson.....Program Technician
- Elizabeth Forsyth.....Program Technician



State Cost-Share Program

In cooperation with the Kansas Department of Agriculture Division of Conservation, the Dickinson County Conservation District facilitates cost-share payments for conservation practices each year.

For the 2021 cost-share funding year, which runs from July 1, 2020 through June 30, 2021, the Dickinson County Conservation District received allocations for Water Resources Cost Share Programs in the amount of \$22,650. In the past, Dickinson County Water Resources cost-share funds have been primarily utilized to install gradient terraces and grassed waterways, although we have also funded storage terraces and other practices. For these practices, the Conservation District will pay 50% of the county average cost, up to \$2,500 per contract.

The Conservation District also received \$14,497 allocated for the Non-Point Source Pollution Cost-Share Program. Non-Point Source Pollution practices include abandoned well plugging and onsite wastewater systems, including septic systems and lagoons. The Conservation District will pay 50% of the county average cost, up to \$300 per contract for abandoned well plugging and 50% of the county average cost, up to \$1,500 for onsite waste systems.

All state funded cost-share allocations go directly to landowners. No administrative expenses are paid using these funds.

For information on applying for cost-share funding, please contact Cindy Montgomery at 785-263-2787,

Funding for some programs provided by the Division of Conservation, Kansas Department of Agriculture through appropriation from the Kansas Water Plan Fund.

The Dickinson County Conservation District prohibits discrimination in all its programs and activities on the basis of race, color, national origin, sex, religion, age, disability, political beliefs, sexual orientation, or marital or family status.

Abilene USDA Service Center Welcomes New Supervisory District Conservationist

Adam Elliot joins NRCS in Abilene as the Supervisory District Conservationist for Dickinson, Clay, and Ottawa County beginning Tuesday, October 27. Please join us and welcoming Adam and his family to the area.

Adam Elliott grew up in Dickinson County working on his family's farm near Chapman, Kansas. He graduated from Chapman High School in 1995 and then attended Kansas State University where he majored in Agronomy and worked for the Environmental Physics and Range Science departments. This is also where he met his wife, Trisha originally from Arlington, Kansas. After graduating, Adam went to work for an environmental engineering company where he worked directly on a contract with the Environmental Protection Agency (EPA) for the next 5 years covering soil and groundwater contamination sites primarily in Kansas, Nebraska, Iowa, and Missouri. His wife Trisha also graduated with an Agronomy degree 6 months later and hired on doing the same work for the same company as Adam. By November of 2004, Adam and Trisha had one child and another one on the way, and while they enjoyed the work they did, the travel and time away from home was not what they saw as a sustainable future for their family. He then decided to hire on as a Soil Conservationist with the State Conservation Commission, where he would work for NRCS on Farm Bill Programs. Adam worked out of Mankato, Beloit, and Belleville Kansas for the next four years, and in the end of 2008, he hired on directly with NRCS and was stationed at the Reno County office in South Hutchinson, Kansas until November of 2010. Adam and his family then moved to Ashland, Kansas, where Adam has been the District Conservationist for the last ten years. In 2012, they welcomed a son into their small home, and life has been a blur ever since. Not ever wanting a dull moment, Adam has been involved with many community/school/church groups and activities along with trying to constantly keep up with his wife who is also involved with "everything" and his kids who enjoy seeing how many sports/activities you can pack into a year (in 2020 he had one kid in high school, one in middle school and one in elementary school)! Now in 2020, when life is already crazy, Adam will again be moving his family to become the new Supervisory District Conservationist responsible for Clay, Dickinson, and Ottawa counties. He is looking forward to being closer to family and friends from the past, but also looks forward to meeting many new faces and becoming involved in new activities. Wish Adam luck when you see him, he's going to need it!



Picture of Adam's Family Left to Right: Alida (16), Trisha, Diehl (7), Adam, and Tanith (14)

Healthy Forests Healthy Communities

The Dickinson County Conservation District invites Dickinson County students to participate in the annual youth poster, limerick, and essay contest – “Healthy Forests Healthy Communities.”

The poster contest is open to public, private, or home school students in Dickinson County. Students will compete in poster categories by grade: K-1; 2-3; 4-6; 7-9; and 10-12. One winner from each of the grade categories will be selected and honored for their commitment to conservation.

The winning poster in each grade category will be entered in the statewide poster contest. Winning entries in the state contest in each category will be entered in the national contest and will be eligible for cash prizes.

Ask your child’s teacher if the class is participating in the contest or stop in at the Dickinson County Conservation District office, 328 NE 14th Street in Abilene for complete rules and an entry form. All students are eligible to participate in the contest, even if their school is not participating. For more information, contact Cindy Montgomery, 263-2787 extension 332.

All entries must be submitted to the Dickinson County Conservation office no later than January 15, 2021.



The following dates are applicable for Dickinson County FSA:

October 30 – WHIP+ application deadline

December 11 - CFAP2 application deadline

December 15 - Fall seeded crops (wheat, triticale) certification deadline

Crops not reported by the applicable deadline are subject to late file fees.

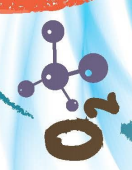
If you have questions, please contact FSA at (785)263-1351.

Dickinson County Cost Share Funding History

The following represents actual dollars of cost-share funding paid to landowners from 2015 to present day

Water Resources		Non Point Source Pollution Control	
2015	\$ 18,780	2015	\$ 12,684
2016	\$ 16,106	2016	\$ 11,973
2017	\$ 16,160	2017	\$ 15,300
2018	\$ 14,321	2018	\$ 11,610
2019	\$ 16,289	2019	\$ 11,010
2020	\$ 18,374	2020	\$15,758

TAKE A DEEP BREATH... IN...OUT.



A large part of that oxygen you just breathed in is made by the leaves found on trees and other green plants. We need and utilize trees all day, every day. **Work** the crossword puzzle to discover some of the benefits that trees provide.

ACROSS

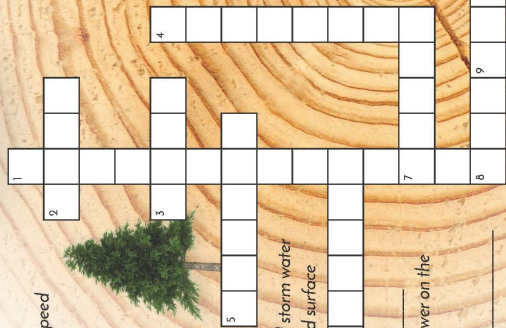
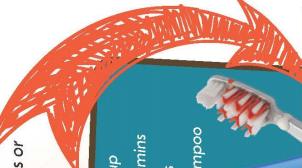
- Evergreen trees can be used to reduce _____ speed and thus loss of heat from your home in the winter by as much as 10 to 50 percent.
- Trees increase the humidity in the air, help increase ground water recharge, and reduce _____ erosion.
- Trees _____ and block noise and reduce glare. A well placed tree can reduce noise by as much as 40 percent.
- Trees prevent storm water run-off and reduce the amount of water we consume and the need for new water treatment plants and storm water structures. A study in Salt Lake City revealed the tree canopy reduced surface runoff by 11.3 _____ gallons following a 1 inch rain.
- Trees help settle out and trap dust, pollen and _____ from the air. The dust level in the air can be as much as 75 percent lower on the sheltered side of the tree compared to the windward side.
- You can improve the efficiency of your heat pump by _____ it with a tree.

DOWN

- Decaying leaves promote soil _____ and provide nutrients for tree growth.
- Fallen tree leaves can reduce soil temperature and soil _____ loss.
- _____ trees block sunlight in the summer but allow sunlight to reach and warm your home in the winter.

There are 25 things in this puzzle that we get from trees or parts of trees. See how many you can find and circle.

- paper
- wood
- shade
- fruit
- nuts
- oxygen
- furniture
- medicine
- paint
- gum
- detergent
- helmets
- toothbrushes
- fabric
- deodorant
- cereal
- books
- maps
- newspaper
- guitar
- crayons
- syrup
- vitamins
- toys
- shampoo



WORD BANK

moisture
absorb
shading
soil
wind
smoke
million
deciduous
microorganisms

Circle the two trees that are exactly alike.



www.fs.educ/learn/kids



National Association of Conservation Districts
National Association of Conservation Districts (NACD)
www.nacdnet.org

Visit: <http://www.nacdnet.org/conservation-education-hub/> for the educator's guide and additional resources.

© NACD 2020 www.nacdnet.org

Conservation District Sponsors



Upland Mutual Insurance, Inc.
Serving Kansas since 1896

2220 Lacy Drive
 Junction City, KS 66441
 785-762-4324
 www.UplandMutual.com

Visit Your Independent Insurance Agent today!

Dickinson County Farm Bureau



Helping Feed the World



(785) 263-1920
 (800) 249-1920
 Fax (785) 263-7933
 Cell (785) 479-6196



DOUG SMART

215 NW 15th • P.O. Box 697 • Abilene, KS 67410
 Email: doug@smart-ins.com
 Web page: www.smart-ins.com

**PROVIDING SUDDEN SERVICE™
 FOR CONSERVATION & AGRICULTURE
 SINCE 1920**


Call us Today for all of your conservation needs!!
 Our Agronomists or Wildlife Biologists are ready to assist!

Native Grasses • Pollinators • Food Plots • Bedding Cover



STAR SEED 101 Industrial Ave
 Osborne, KS 67473 **800-782-7311**

Meuli, Inc.
 Dirt Contractor
Dwight Meuli
 Owner/Operator
 785-479-2158
 785-479-6422



1142 Jeep Road
 Abilene Kansas 67410

Abilene Rent-All & Sales, Inc
 1701 West First St. Abilene 785-263-7668

Sales & Service
 Cub Cadet, Husqvarna, Toro & Echo,
 We Service Most Small Engines

We Rent "Almost" Everything



**P.O. Box 157
 Hope, KS 67451**

785-366-7213
 www.agritrails.com

Carlton, Chapman, Dillon, Durham, Durham Station,
 Gypsum, Herington, Hope, Lincolnville, Navarre,
 Pearl, Tampa, White City Station, Woodbine

**REDUCE
 REUSE
 RECYCLE
 REDUCE
 REUSE
 RECYCLE**



sharpseed.com



ROOTED IN THE PAST
 Growing for the Future



Sharp Bros. Seed Co.
 (620)398-2231
 sales@sharpseed.com

Basements, Ponds, Building fills, terraces
HOFFMAN CONSTRUCTION
 EARTHMOVERS

Over 30 years experience
BOB HOFFMAN



785-479-5547 

Cell: **785-366-0443**
 All your soil conservation needs

**HETTENBACH
 CONSTRUCTION CO.**
 907 NW 3rd Street • Abilene, KS 67410
785-263-5677



Paul Hettenbach
 paulhettenbach@gmail.com 



SERVE. INNOVATE. GROW.

(785) 949 - 2204
 www.PhillipsSeed.com

HOPE - ASSARIA - TESCOTT



Crop Service

(785) 263-3037

ABILENE

Thank you to all our sponsors!

Conservation District Services

Equipment Rental and Sales

The Dickinson County Conservation District provides conservation equipment rental service to area landowners. Contact Cindy Montgomery at 785-263-2787 extension 332 to schedule your

Great Plains No Till Drill

Delivered: \$50 Delivery Fee + \$15/Acre
First 1/2 Acre Free
Customer Pickup: \$15/Acre
\$80 Minimum

Truax Grass Seed Drill

Delivered: \$40 Delivery Fee + \$11/Acre
First 1 Acre Free
Customer Pickup: \$11/Acre
\$40 Minimum

Drip Torch

\$100 Deposit
\$5/Day 1st 3 Days
\$25/Day After 3 Days

CoCoRaHS Rain Gauge—\$32

30" Wire Stem Marking Flags—Fluorescent Pink

100 for \$10.00 or 1000 for \$100.00
(\$10 minimum)



Funding to produce this newsletter is provided in part by the Division of Conservation through appropriation from the Kansas Water Plan.

The Dickinson County Conservation District prohibits discrimination in all its programs and activities on the basis of race, color, national origin, sex, religion, age, disability, political beliefs, sexual orientation, or marital or family status.

CALENDAR

- October 30 – WHIP+ application deadline
- November 9 – Regular Board Meeting
- November 11 – OFFICE CLOSED – Veterans Day
- November 26 – OFFICE CLOSED – Thanksgiving Day
- December 11 – CFAP2 application deadline
- December 15 – Fall seeded crops (wheat, triticale) certification deadline



Dickinson County Conservation District
328 NE 14th Street
Abilene, KS 67410

«AddressBlock»